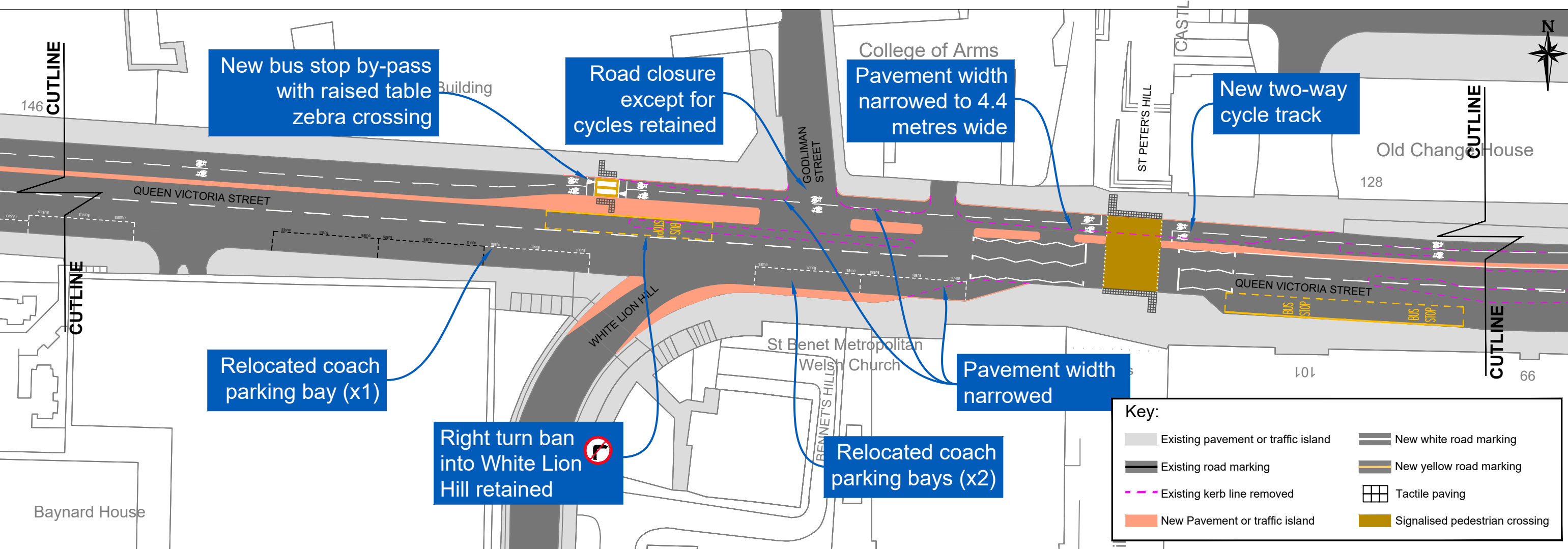
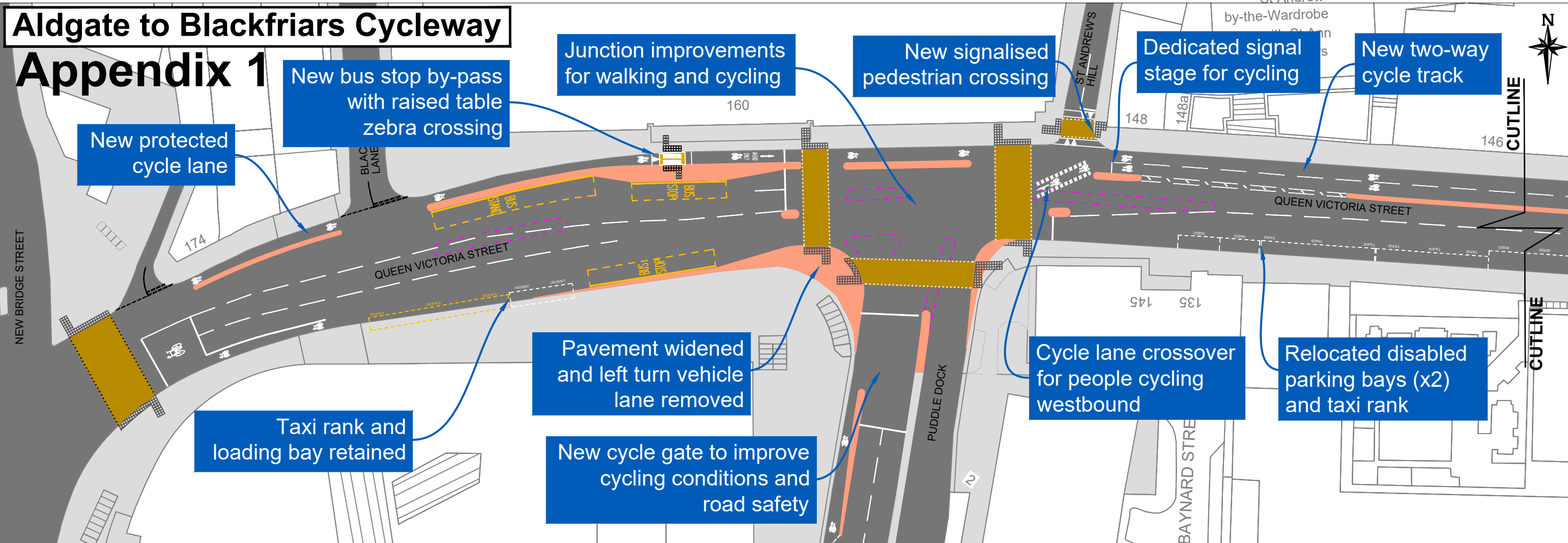


# Aldgate to Blackfriars Cycleway

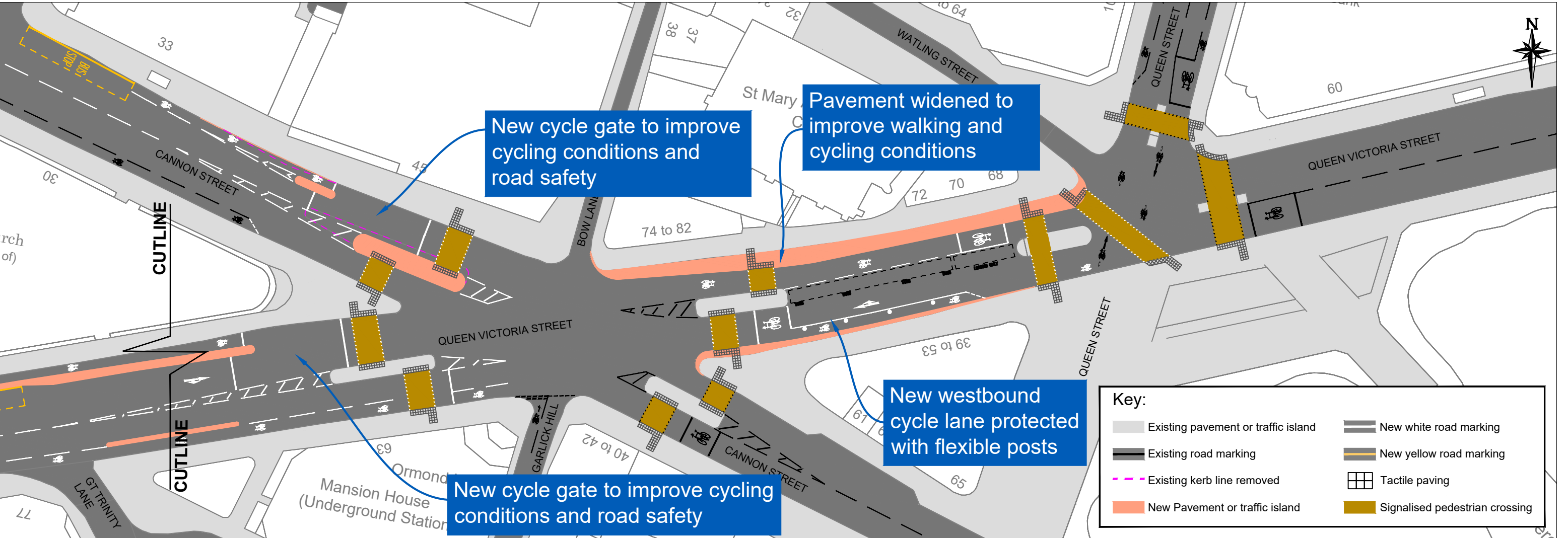
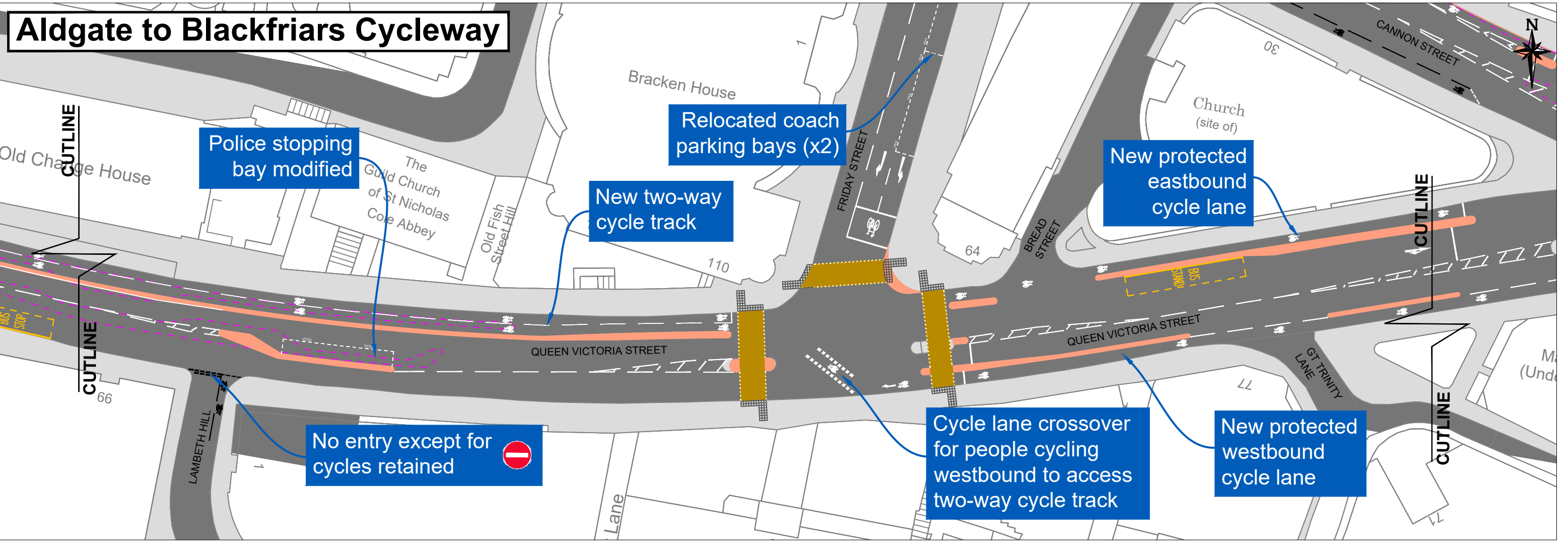
## Appendix 1



**Key:**

Existing pavement or traffic island	New white road marking
Existing road marking	New yellow road marking
Existing kerb line removed	Tactile paving
New Pavement or traffic island	Signalised pedestrian crossing

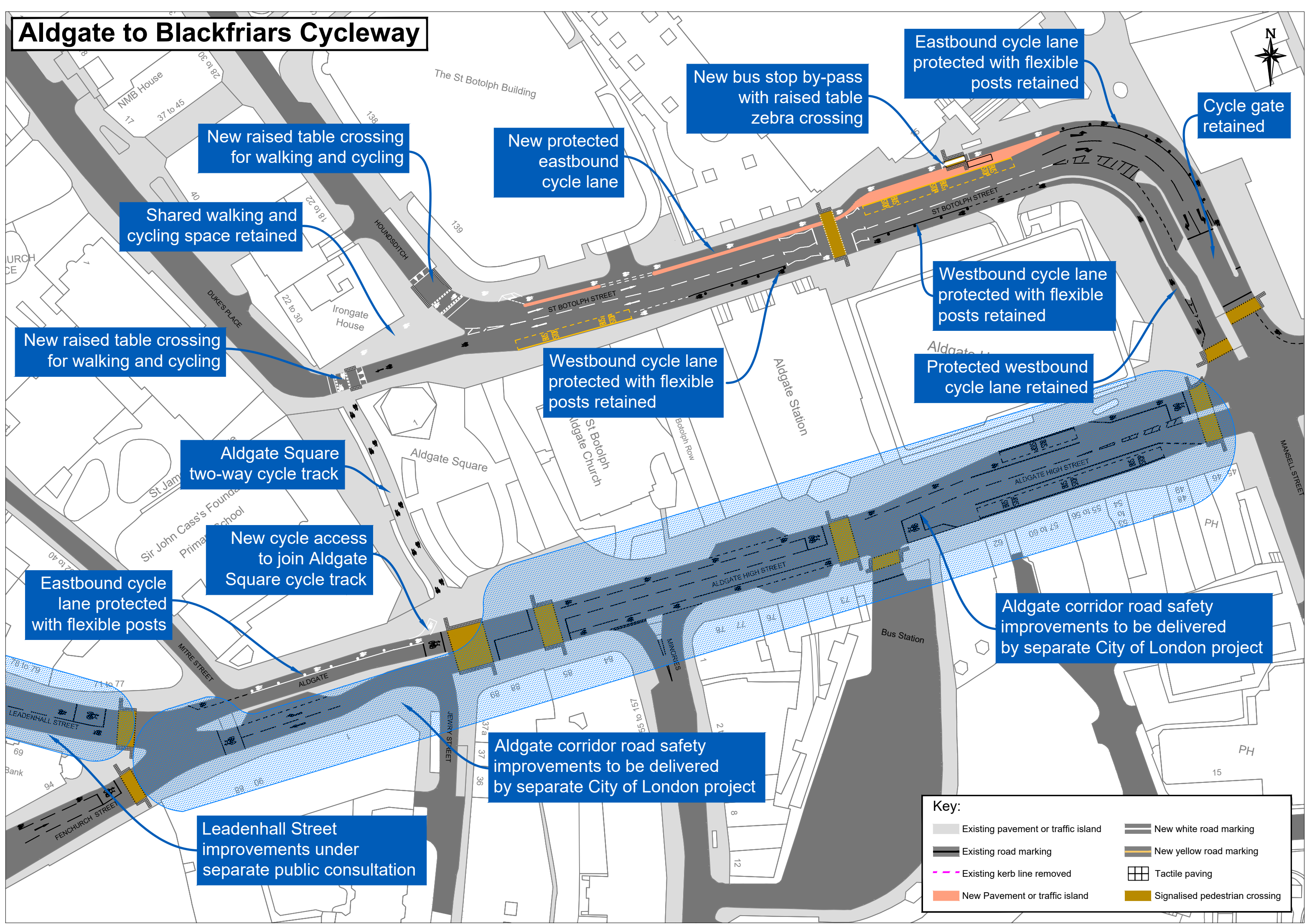
# Aldgate to Blackfriars Cycleway



Key:	
Existing pavement or traffic island	New white road marking
Existing road marking	New yellow road marking
Existing kerb line removed	Tactile paving
New Pavement or traffic island	Signalled pedestrian crossing



# Aldgate to Blackfriars Cycleway



New raised table crossing for walking and cycling

Shared walking and cycling space retained

New raised table crossing for walking and cycling

New protected eastbound cycle lane

New bus stop by-pass with raised table zebra crossing

Eastbound cycle lane protected with flexible posts retained

Cycle gate retained

Westbound cycle lane protected with flexible posts retained

Protected westbound cycle lane retained

Westbound cycle lane protected with flexible posts retained

Aldgate Square two-way cycle track

New cycle access to join Aldgate Square cycle track

Eastbound cycle lane protected with flexible posts

Aldgate corridor road safety improvements to be delivered by separate City of London project

Aldgate corridor road safety improvements to be delivered by separate City of London project

Leadenhall Street improvements under separate public consultation

**Key:**

Existing pavement or traffic island	New white road marking
Existing road marking	New yellow road marking
Existing kerb line removed	Tactile paving
New Pavement or traffic island	Signalled pedestrian crossing